



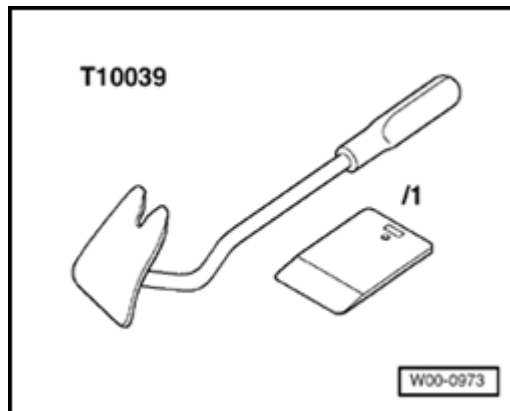
## Luggage compartment and cargo area trim

### Tools

#### Required special tools and equipment



- ◆ T10039 Pry bar





## Luggage compartment trim, removing and installing

### **CAUTION!**

***Before working on electrical system, disconnect battery Ground strap.***

### Removing

#### **Notes:**

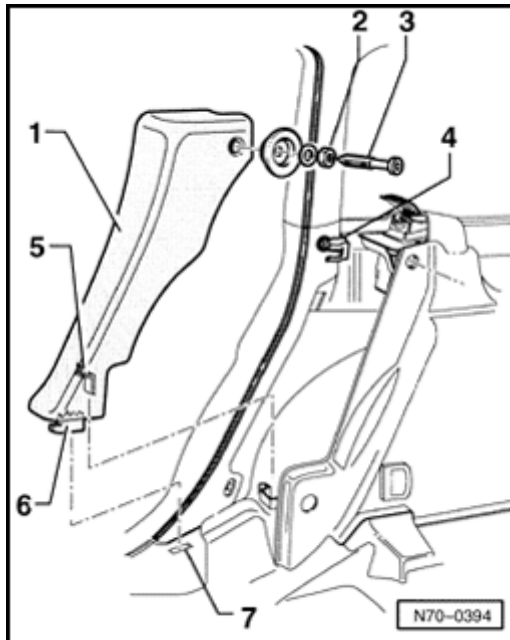
- ◆ *Illustration for right side only, symmetrically opposite for the left side.*
- ◆ *Before disconnecting the battery, obtain radio anti-theft code.*

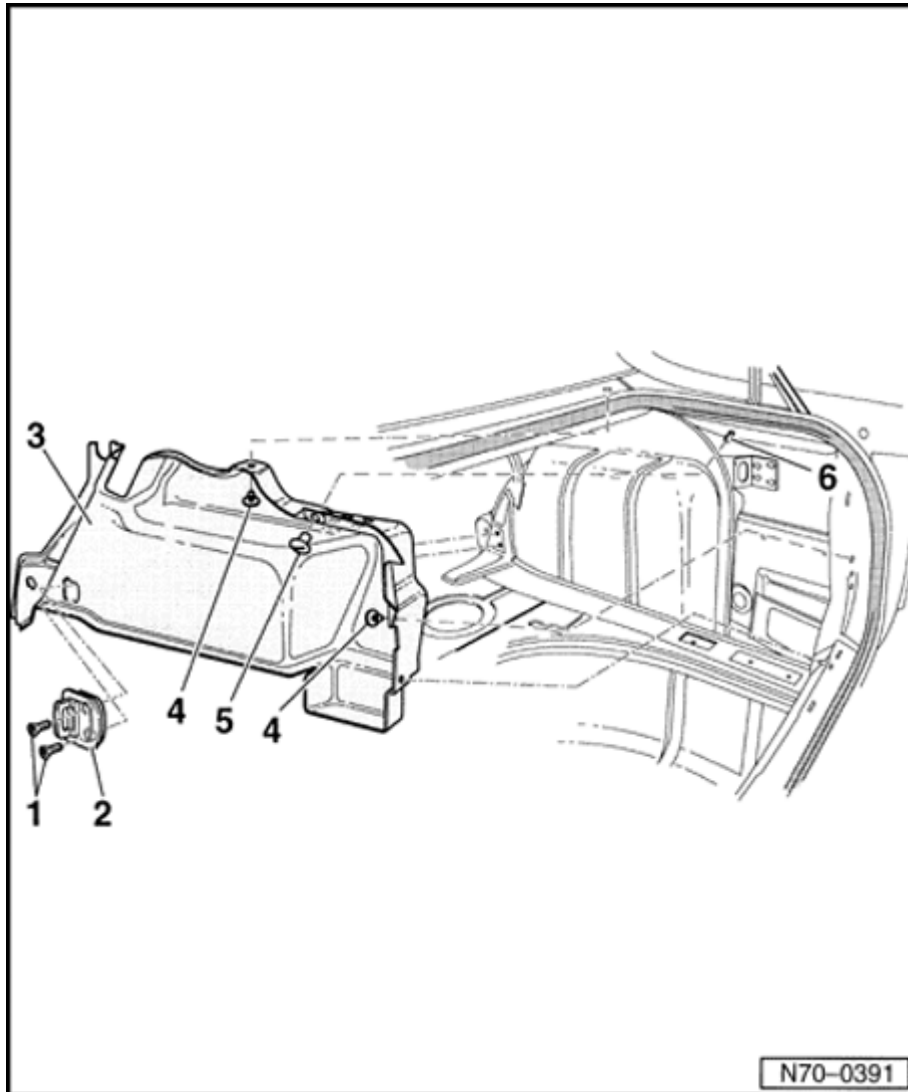


- Remove rear lock carrier cover ⇒ [page 70-61](#) .
- Remove right seatback for rear seat bench ⇒ [page 72-28](#) .



- Loosen hex nut -2- and unscrew lock bolt -3-.
- Pull cushion -1- in upper area out of clip -4-, press lower tab -6- to the back from sill plate -7- and remove with tab -5- upward.





- Remove screws -1-.
- Remove lashing eyes -2-.
- Remove clips -4-.
- Unscrew plugs -5- from threaded pin -6-.
- Remove trim -3-.

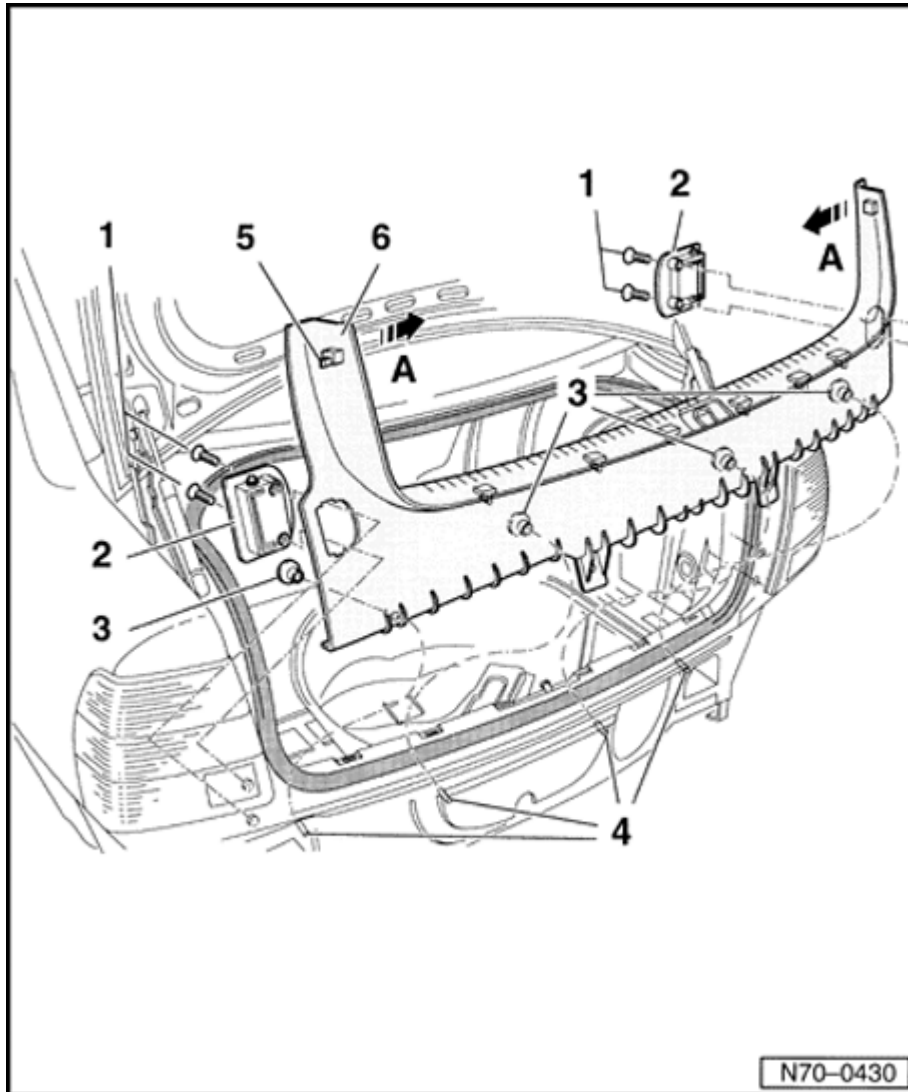


## Installing

- Install in reverse order of removal.

### **Note:**

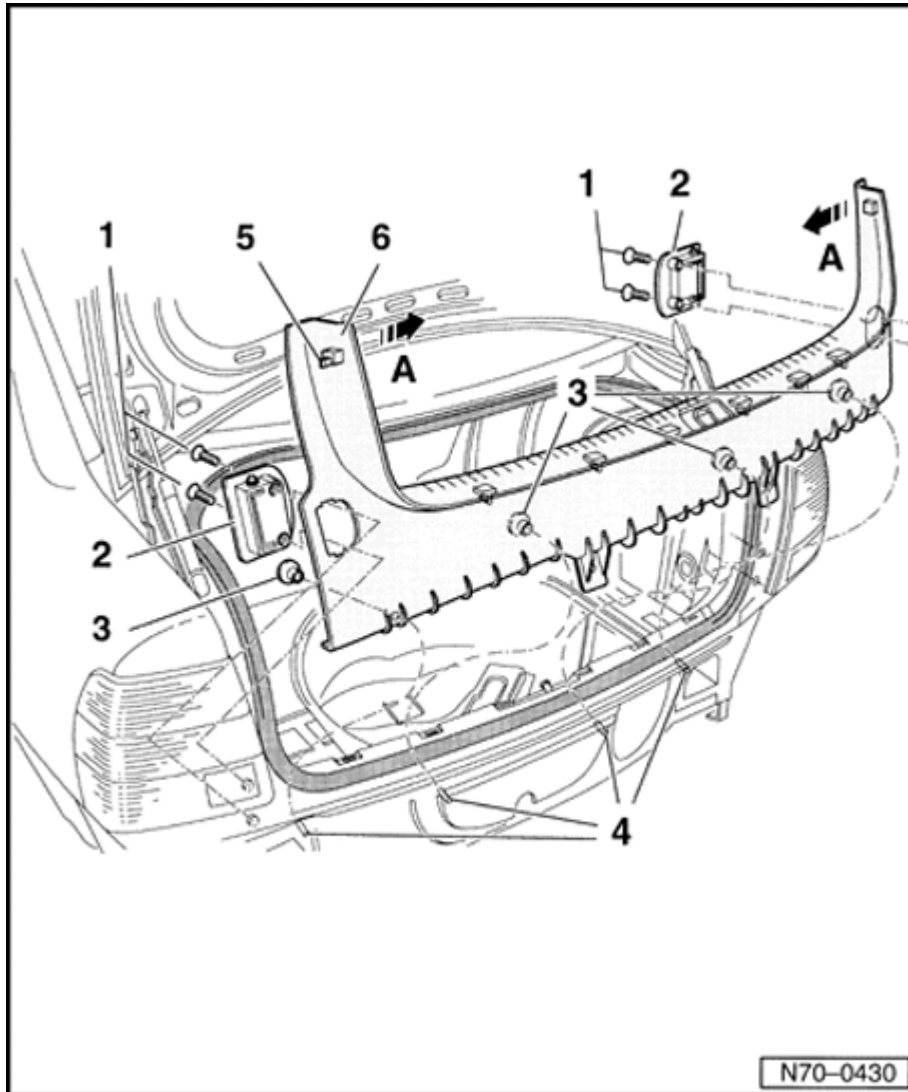
*After disconnecting the battery make sure that the vehicle equipment (radio, clock and power window regulators) are checked according to repair manual and/or operating instructions.*



## Rear lock carrier cover, removing and installing

### Removing

- Remove screws -1-.
- Remove lashing eyes -2-.
- Unscrew four plugs -3- with screwdriver from threaded pins -4-.
- Unclip upper edge of cover -6- (arrows -A-).
- Unclip cover from lock carrier upward.



## Installing

- Install in reverse order of removal.

### **Note:**

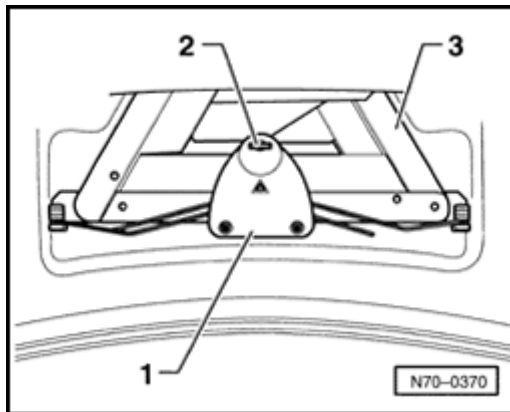
*Check and if necessary replace plugs -3- and clips -5- before installing.*



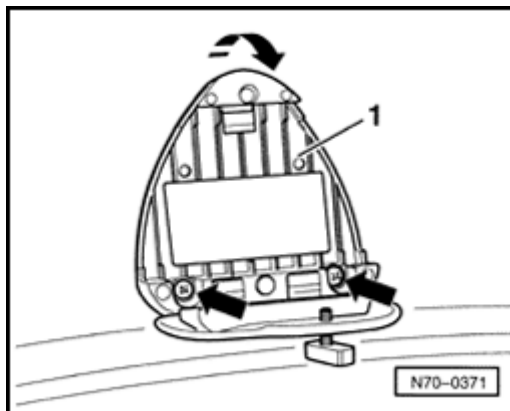
## Rear lid trim, removing and installing

➤09.00

### Removing

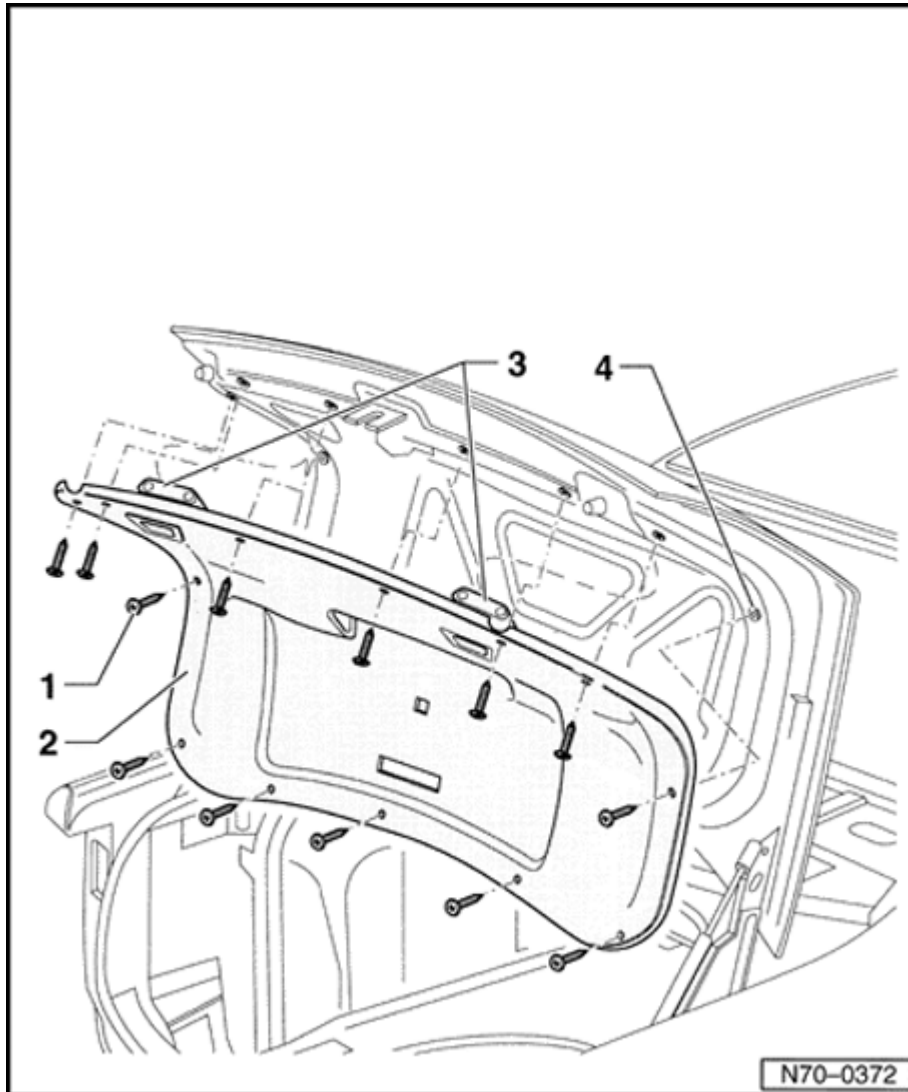


- Unscrew lock -2-.
- Fold open bracket -1- and remove emergency triangle -3-.



- Unscrew Phillips-head screws (arrows).
- Slide bracket -1- upward and remove.





- Unscrew thirteen screws -1-.
- Pull out trim -2- with handle well-3- from rear lid and remove

### Installing

- Check expanding nuts -4-, replace if necessary and insert in rear lid holes.
- Install trim -2- with screws.
- Install bracket for emergency triangle and secure.
- Insert emergency triangle in bracket.
- Fold bracket and screw on lock.

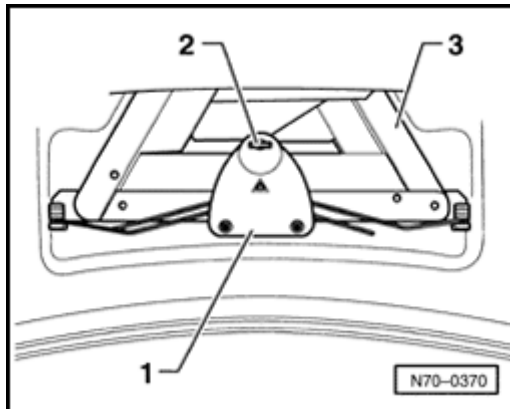


## Rear lid trim, removing and installing 10.00 ➤

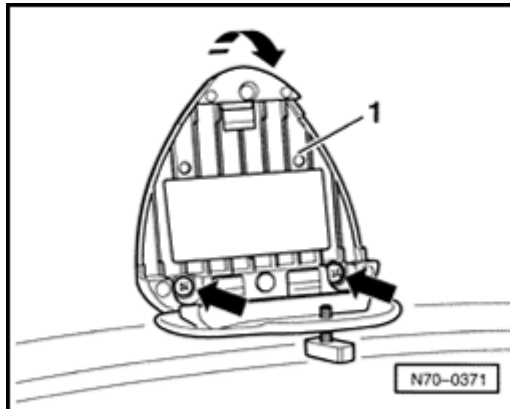
### Removing

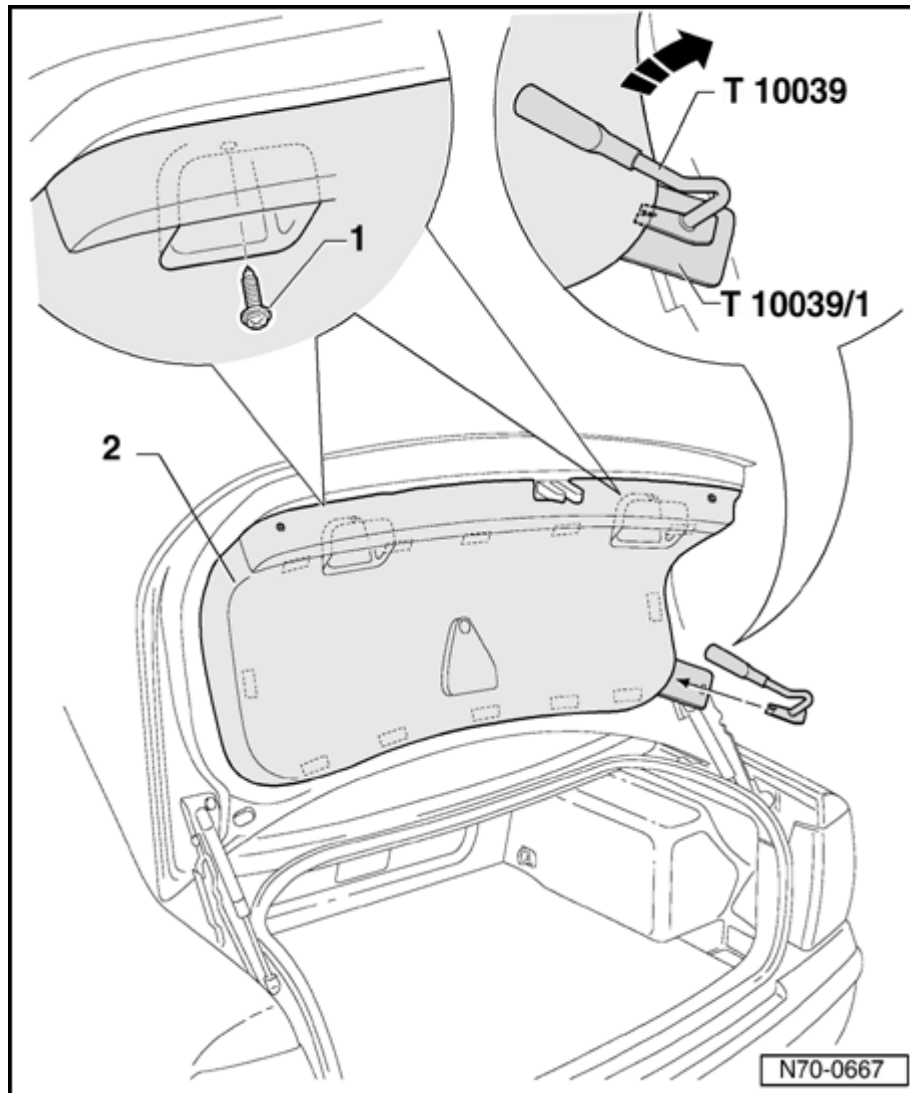


- Unscrew lock -2-.
- Fold open bracket -1- and remove emergency triangle -3-.



- Remove screws -arrows-.
- Slide bracket -1- up and remove.





- Unscrew the two screws -1- from handle recess.
- Position wedge T10039/1 in area of steel clip and unclip the rear lid trim with release lever T10039.

### Installing

#### **Note:**

- ◆ *Check steel clips before fitting, replace if necessary.*

Install trim -2- in reverse order of removal.

- Insert bracket for warning triangle and secure with screws.
- Insert warning triangle into bracket.
- Close bracket and tighten securing device.



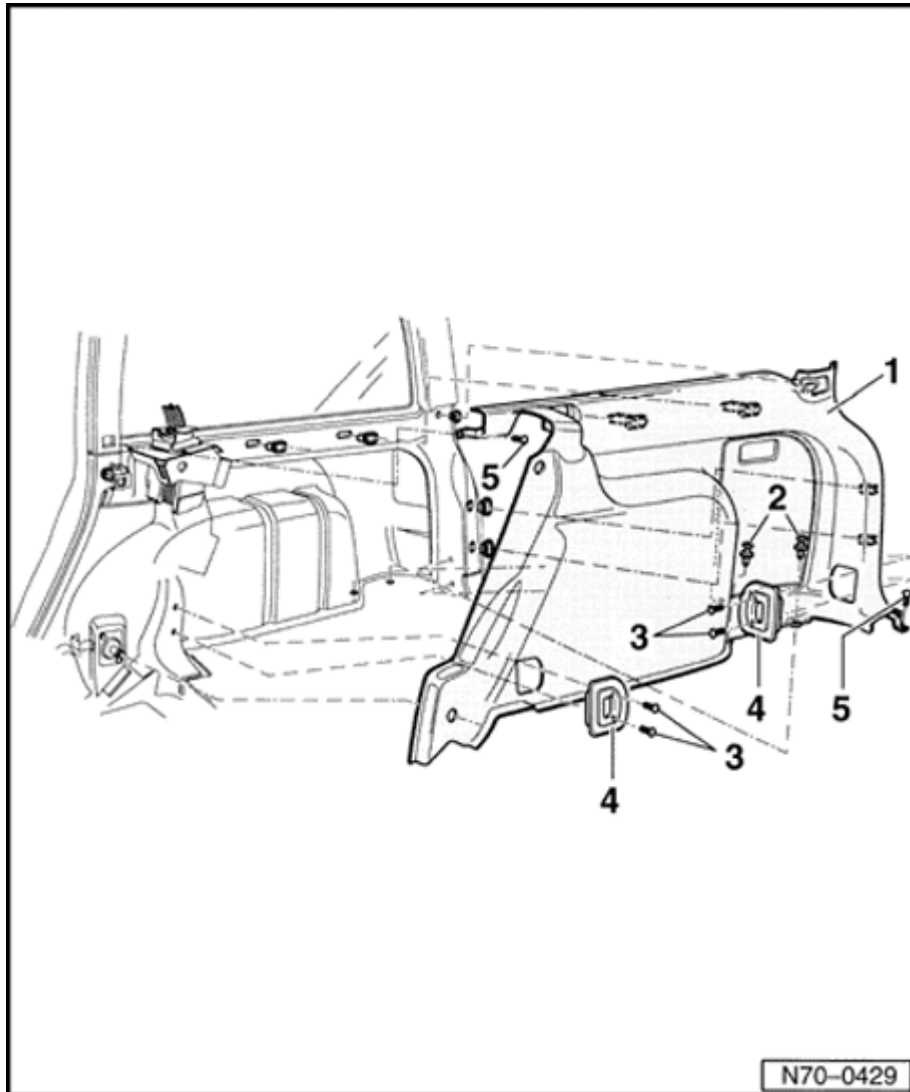
## Cargo area trim, removing and installing (wagon)

### **CAUTION!**

***Before working on electrical system, disconnect battery Ground strap.***

### **Notes:**

- ◆ *Illustration for right side only, symmetrically opposite for the left side.*
- ◆ *Before disconnecting the battery, obtain radio anti-theft code.*



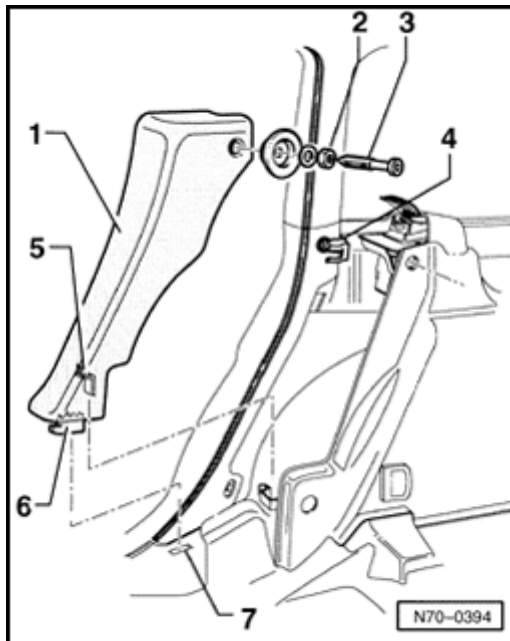
## Assembly overview

- 1 - Trim panel
- 2 - Expanding clip
- 3 - Bolts for lashing eyes
- 4 - Lashing eyes
- 5 - Bolts

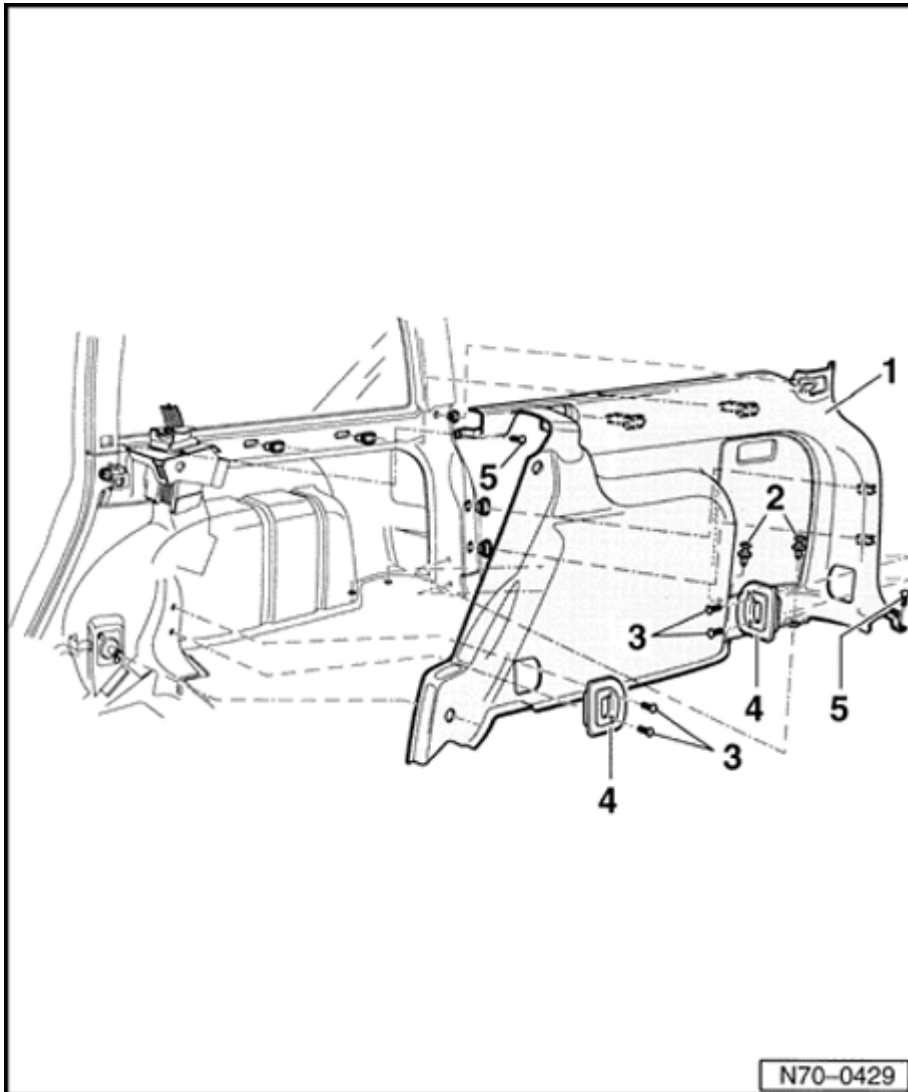


## Removing

- Remove cargo area cover ⇒ [page 70-74](#) .
- Remove cover for lock carrier ⇒ [page 70-72](#) .
- Remove right seatback of rear seat bench ⇒ [page 72-28](#) .
- Replace cargo area floor covering ⇒ [page 70-82](#) .



- Loosen hex nut -2- and unscrew lock bolt -3-.
- Pull cushion -1- in upper area out of clip -4-, press lower tab -6- to the back from sill plate -7- and remove with tab -5- upward.



- Expanding clip -2- pressed out with assembly lever 80-200.
- Remove bolts -3- and remove lashing eyes -4-.
- Remove screws -5-.
- Remove trim -1-.



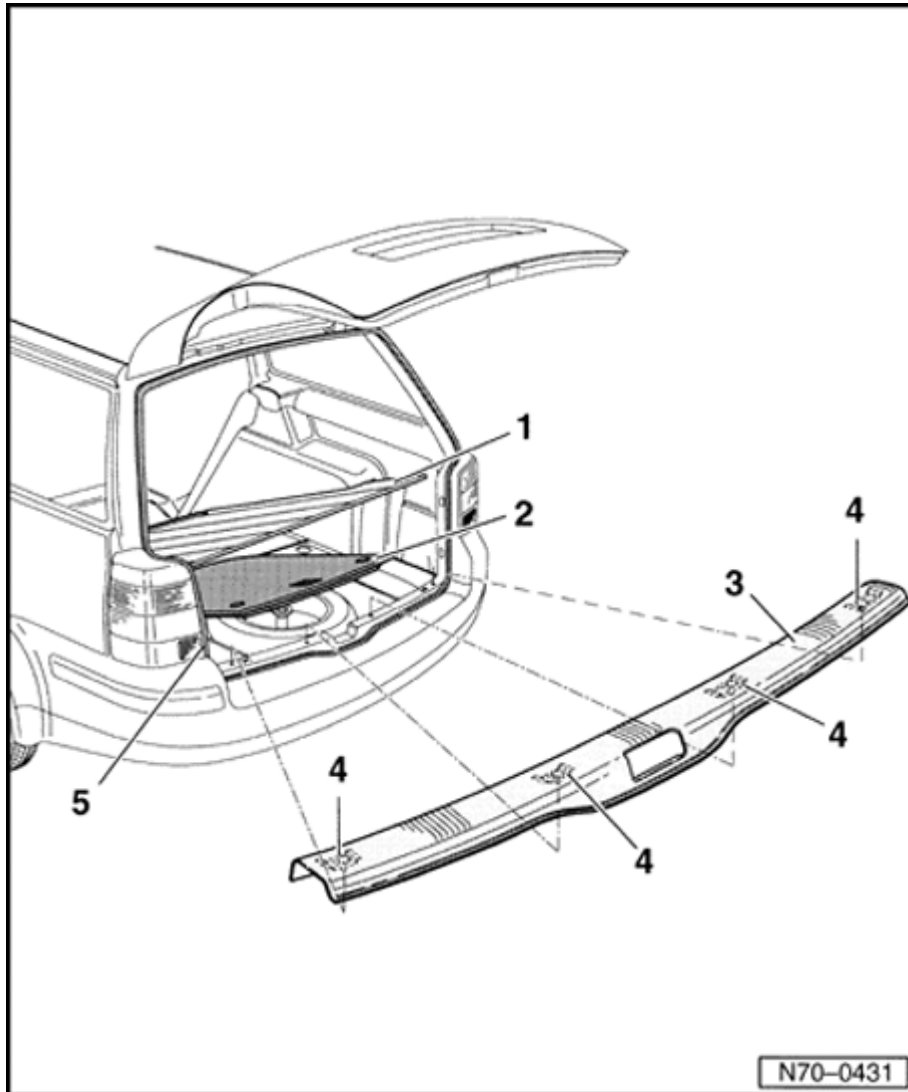
## Installing

- Install in reverse order of removal.

### **Note:**

*After connecting the battery make sure that the vehicle equipment (radio, clock and power window regulators) are checked according to repair manual and/or operating instructions.*

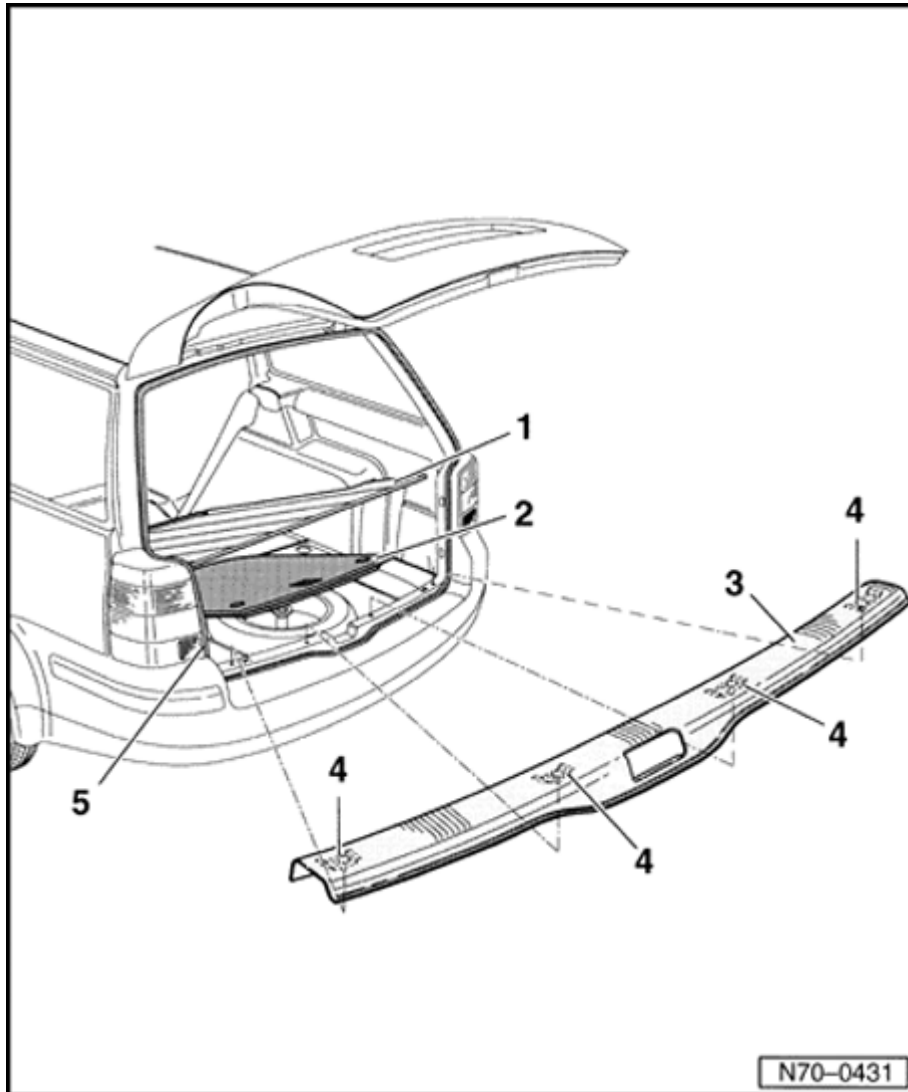




## Rear lock carrier cover, removing and installing (wagon)

### Removing

- Raise cargo area floor -1-.
- Open spare tire well cover -2- pull up and support.
- Unclip lock carrier cover -3-.

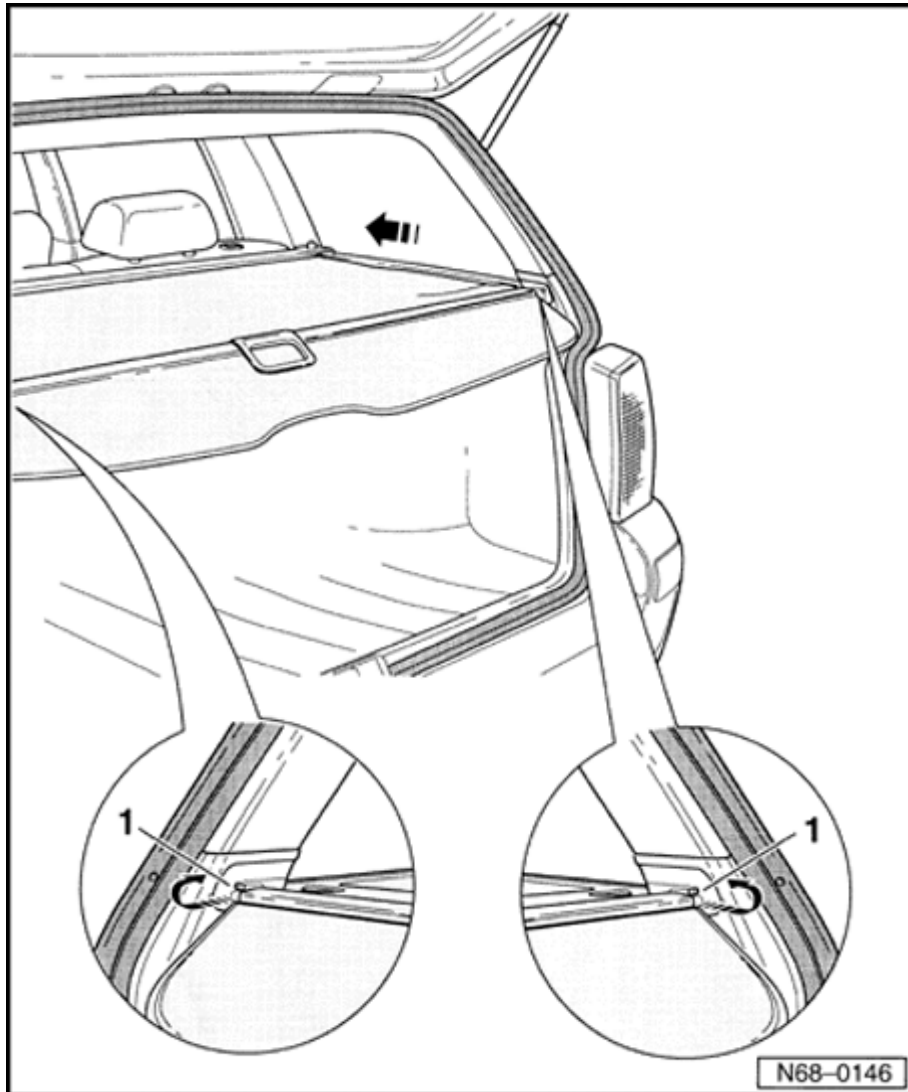


## Installing

- Install in reverse order of removal.

### Notes:

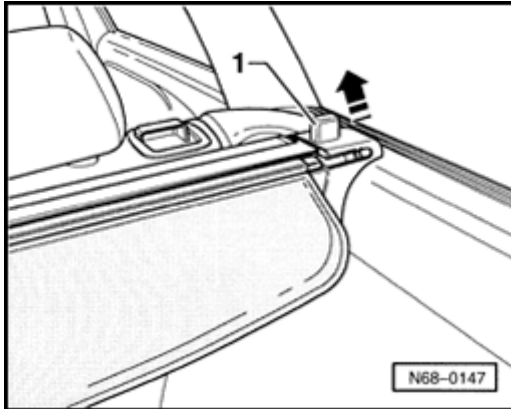
- ◆ Check cover clips -4- and replace if necessary before installing.
- ◆ Make sure seal -5- is seated correctly after installing.



## Cargo area cover, removing and installing

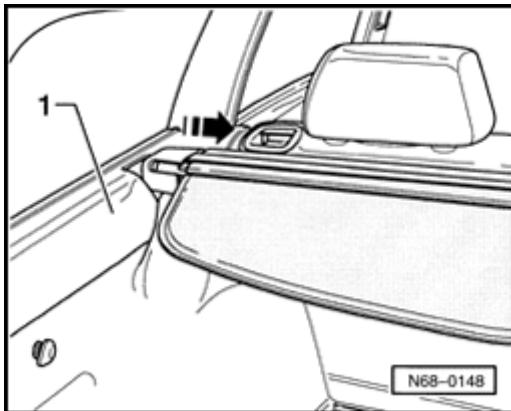
### Removing

- Pull cargo area cover to the back from retainers - 1-.
- Carefully roll up in direction of arrow (automatic roll up).



A

- Push down lock button-1-
- Pull out cargo area cover from the right side trim (arrow).

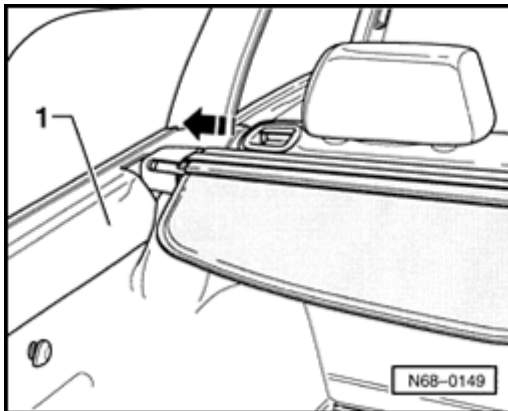


A

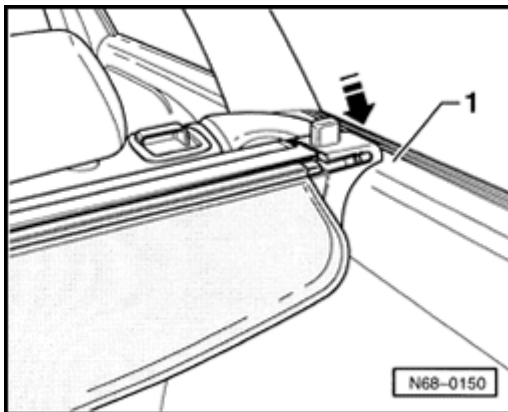
- Pull out cargo area cover from the left side trim -1- (arrow).



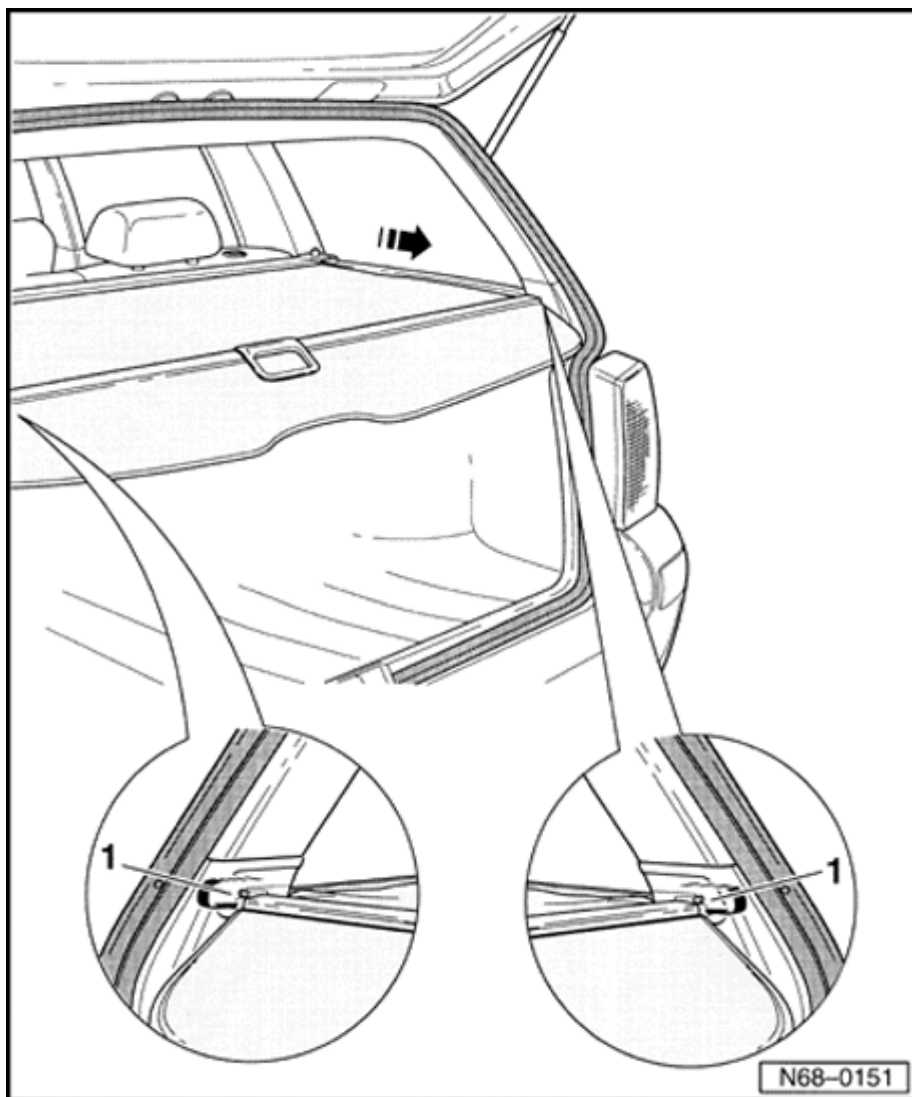
## Installing



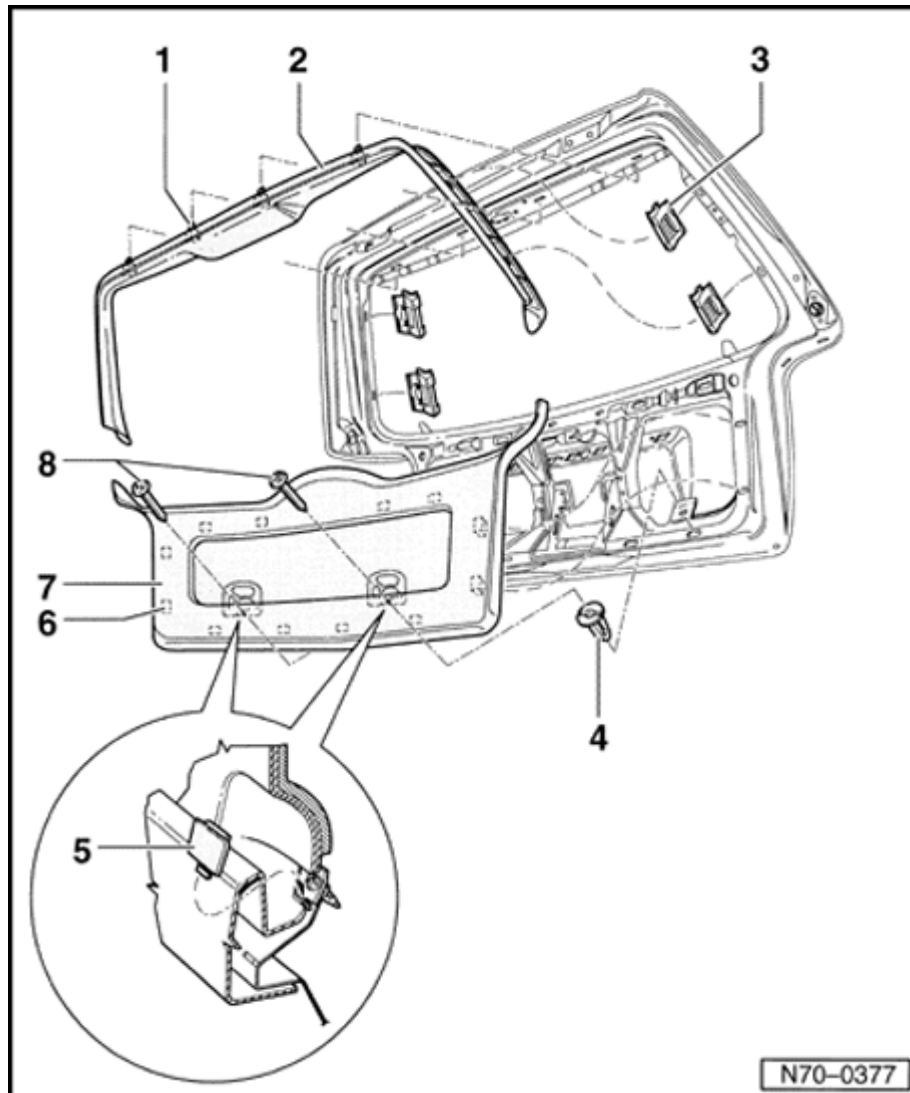
- Guide in cargo area cover in the left side trim -1- (arrow).



- Engage cargo area cover into the right side trim -1- (arrow).



- Hook cargo area cover in rear retainers -1- (arrows).



## Tailgate trim, removing and installing (wagon) ➤ 09.00

### 1 - Clip

- ◆ Qty.: 4

### 2 - Upper trim

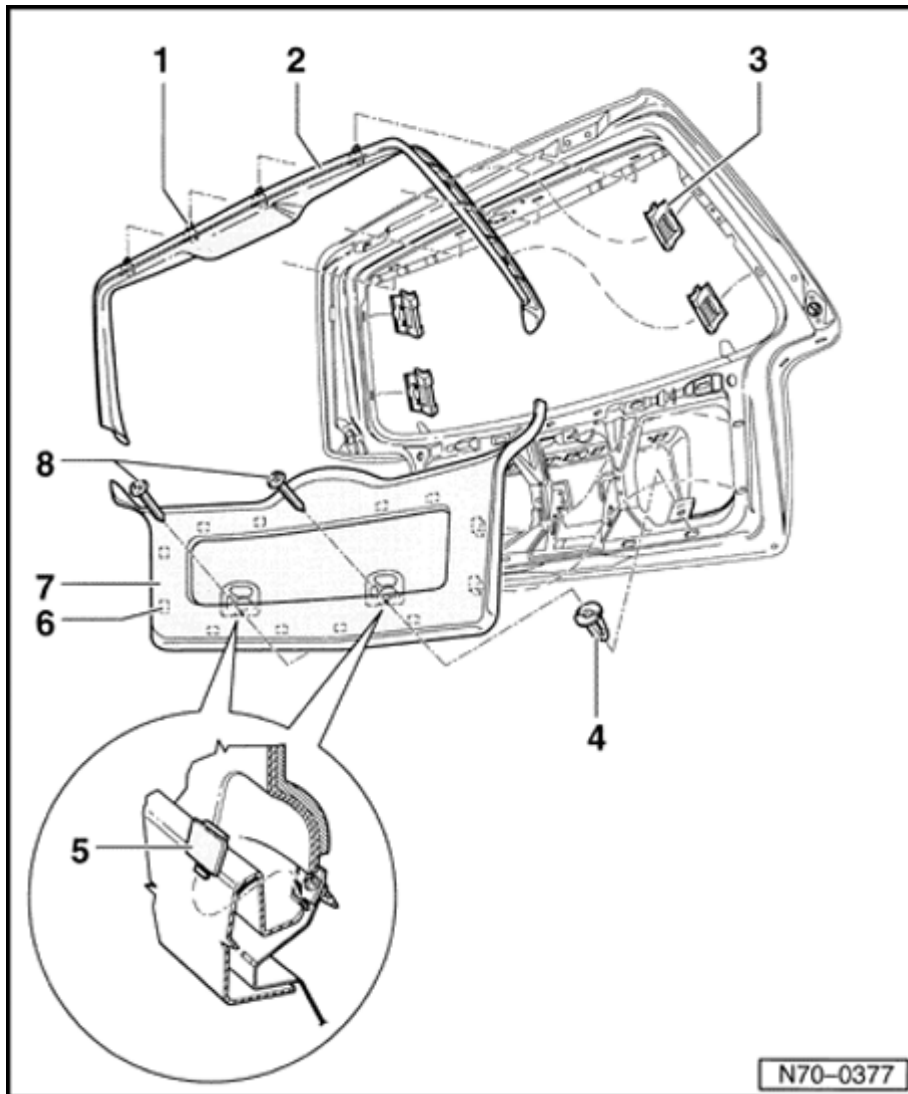
- ◆ Removing:

- Remove lower trim -7-.
- Unclip upper trim -2- first laterally out of clips -3- and then from the upper area.

- ◆ Check and if necessary replace clips -1- before installing trim and insert in mounting of trim.

### 3 - Clip

- ◆ Qty.: 4
- ◆ Check for damage and replace if necessary before installing the upper trim.

**4 - Expanding nut**

- ◆ Qty.: 2

**5 - Cover cap**

- ◆ Qty.: 2

**6 - Clip**

- ◆ 12 pieces

**7 - Lower trim**

- ◆ Removing:

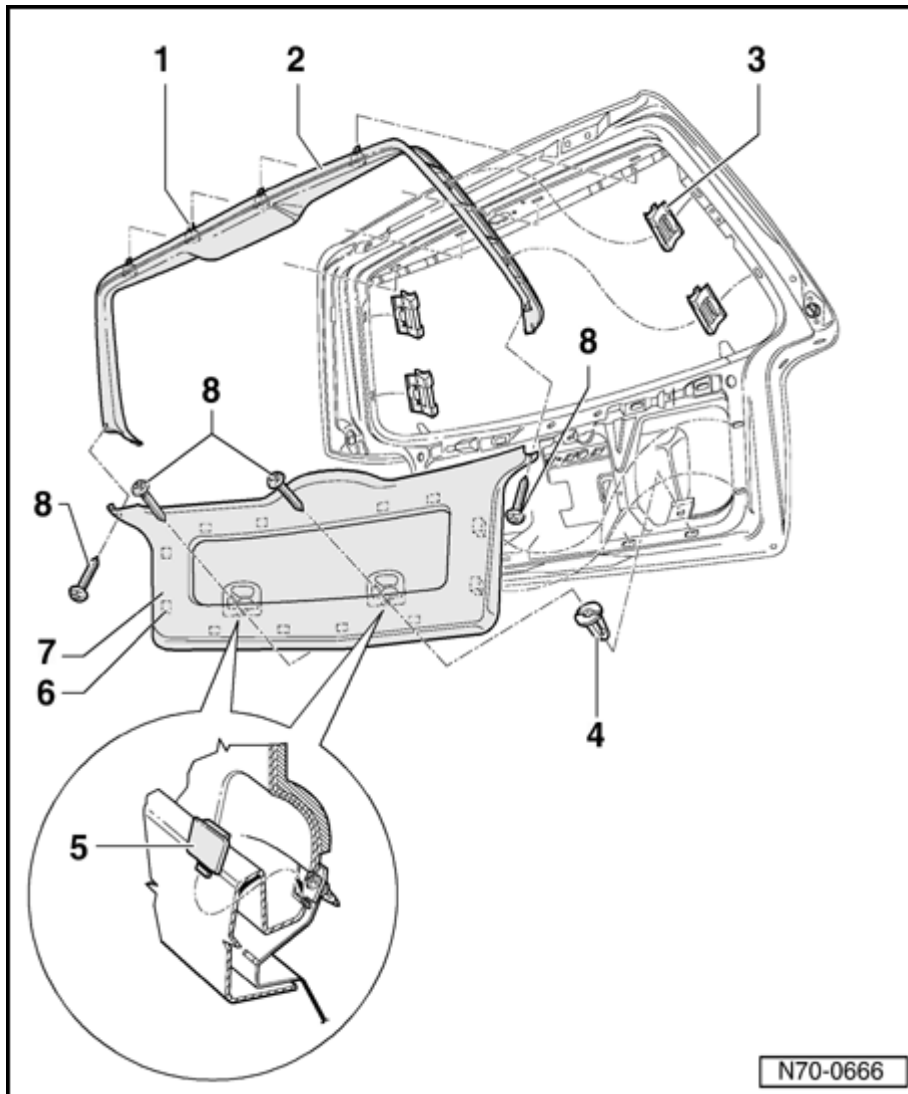
- Pry out caps -5-.
- Remove screws -8-.
- Begin un-clipping lower trim -7- from below.

- ◆ Check and replace if necessary trim clips -6- before installing and insert in mounting of trim.

**8 - Screw**

- ◆ Qty.: 2





## Tailgate trim, removing and installing (wagon) 10.00 ➤

### 1 - Clip

- ◆ Qty. 4

### 2 - Upper trim

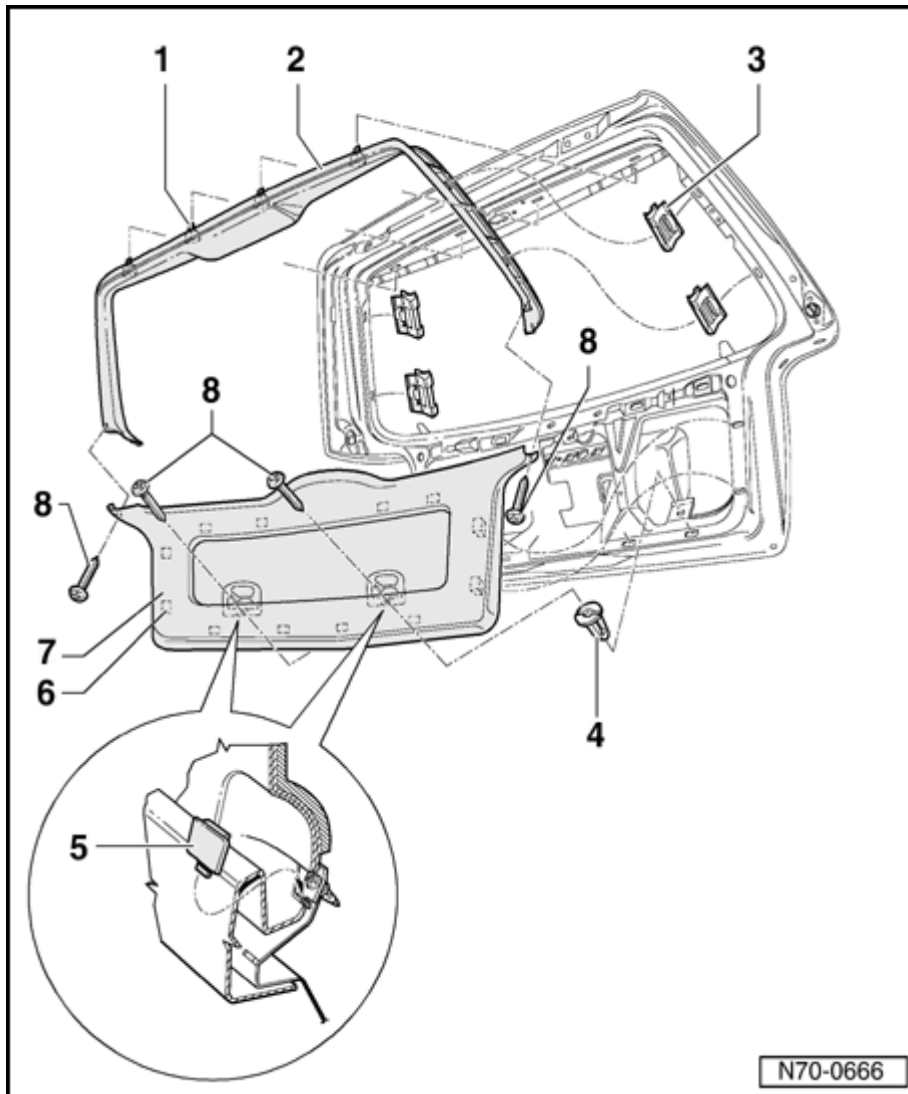
- ◆ Removing:

- Remove lower trim panel -7-.
- Unclip trim panel -2- sides from clips -3- first, then unclip upper area.

- ◆ Check clips -1- before fitting trim, replace if necessary and insert into trim mountings.

### 3 - Clip

- ◆ Qty. 4
- ◆ Check for damage and if necessary replace before fitting upper trim panel.

**4 - Expanding nut**

- ◆ Qty. 2

**5 - Cover Cap**

- ◆ Qty. 2

**6 - Clip**

- ◆ Qty. 12

**7 - Lower trim**

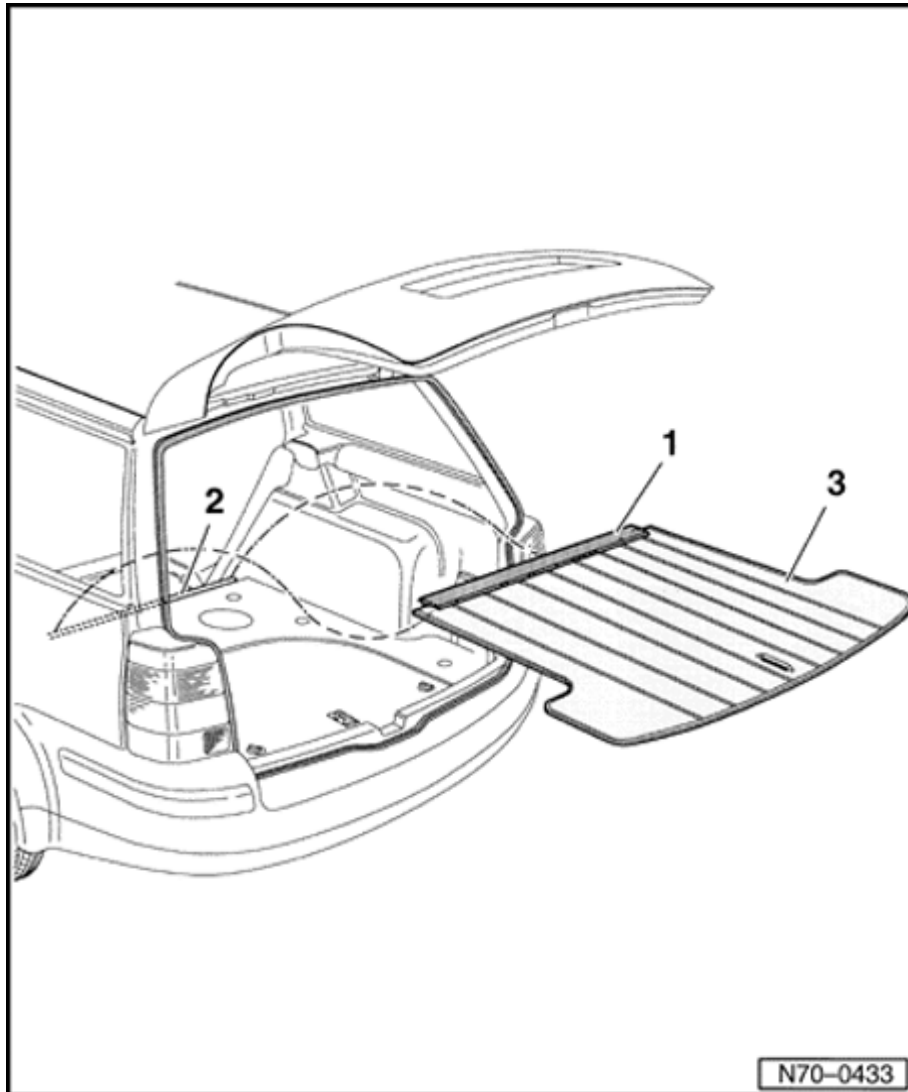
- ◆ Removing:

- Pry out cover caps -5-.
- Remove bolts -8-.
- Unclip lower trim panel -7- starting at lower edge.

- ◆ Check clips -6- before fitting trim, replace if necessary and insert into trim mountings.

**8 - Screw**

- ◆ Qty. 4



### Cargo area floor covering, removing (wagon)

- Unlock rear seat back and fold forward.
- Remove welting strip -1- of pad -3- from fastening rail -2-.
- Remove pad -3- out of the vehicle toward rear.